

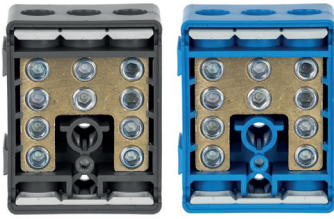


Palazzoli
GROUP



DISTRIBUTION TERMINAL BLOCKS

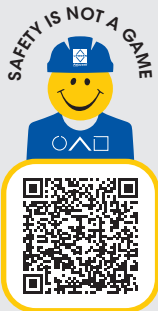
- > Designed to ensure safe terminations for any application with the ease of installation and maintenance.
- > Provide a neat and aesthetically pleasing appeal to the overall installation.
- > 5 different colour-coded terminals for quick identification of phase, neutral, and earth connections.
- > Modular construction allows for them to be close coupled.
- > Dual cable entry points allow for flexibility in installation.



Distribution Terminal Blocks

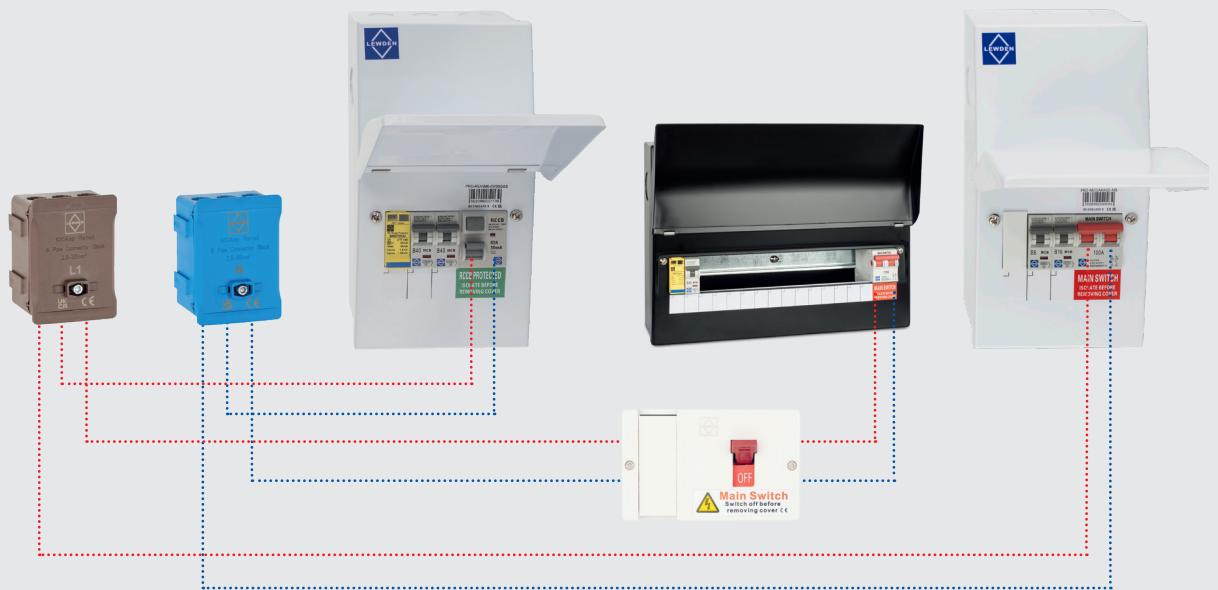
- 5 Way Single Pole Distribution Terminal Blocks - 100A 230V AC
- Can accept up to 5 conductors with a generous cable capacity from 2.5 to 35mm².
- Dual screw terminations to ensure secure and reliable connections.
- Ingress Protection IP20; 960°C glow wire tested
- Secure cover with wire locking capability to aid the installation process.

Part number	Colours	Dimensions H x W x D (mm)
DT1005BR	Brown	70 x 49 x 43
DT1005BK	Black	70 x 49 x 43
DT1005GY	Grey	70 x 49 x 43
DT1005BL	Blue	70 x 49 x 43
DT1005GN	Green	70 x 49 x 43



Scan to explore
the technical data
and details

Designed for secure terminations across various applications,
offering simplicity in installation and maintenance



LEWDEN LTD
Unit 4, Bradbury Drive,
Springwood Industrial Estate,
Braintree
Essex
CM7 2SD

Tel.: +44 (0) 1376 336 200
sales@lewden.co.uk

www.lewden.com



For instant access to technical support through
our team of expert engineers.